


# Smart Event Planner App Manual

20 August 2017

## Overview



Stand ID	Client Name	Short Name	Plot Number	Avenue	Stand Type	Frontage	Depth	Height	Zones	Tents	Floor	Electricity	Water	Fire
4611.001	Hughes Fresh Fruit Ltd	FRUIT	342	D4,342	Stand	11	3	0	D4					
4611.002	Hughes Fresh Fruit Ltd	FRUIT	711	CAT2,711	Stand	6	3	0	CAT2					
4611.003	Hughes Fresh Fruit Ltd	FRUIT	399	E7,399	Stand	6	3	0	E7					
4611.004	Hughes Fresh Fruit Ltd	FRUIT	724	K3,724	Stand	6	3	0	K3					
4613.001	Aberystwyth University	ABER	469	G2,469	Building	3	3	0	G2					
4632.001	Beamans Saddlery Ltd	BEAM	532	J1,532	Stand	9.14	7.5	0	J1					
4635.001	Hudlow Heathen	HUDLOD	766	FOR8,766	Stand	9	6	0	FOR8					
4636.001	Reserved	RESV015	528	J1,528	Stand	3	6	0	J1					
4636.002	Reserved	RESV017	799	CCA10,799	Stand	5	5	0	CCA10					
4636.003	Reserved	RESV015	862	M4,862	Stand	4	4	0	M4					
4640.001	Thermal Earth Ltd	THERM	274	D1,274	Stand	9	7.5	0	D1					
4654.001	ASD Info Wales	ASDINF	113	B2,113	Stand	6	7.5	0	B2					
4657.001	Kangaroo Kid	KANG	563	J41,563	Stand	30	10	0	J41					
4665.001	Millwood Crafts	MILL	152	B4,152	Stand	8	6	0	B4					
4667.001	R.S.P.B	RSPB	145	B3,145	Stand	3.5	6	0	B3					
4674.001	Rassauheath College	REAS	785	CCA4,785	Stand	12	6	0	CCA4					
4692.001	Orchard Furniture	ORCH	191	C2,191	Stand	6	6	0	C2					
4700.001	Connolly's Red Mills (UK) Ltd	CONN	602	HOR2,602	Stand	9.5	7.5	0	HOR2					
4718.001	Phillip Tees Wedding Ltd	PHREE	536	H2,536	Stand	9	8.5	0	H2					
4728.001	House of Tweed Ltd	TWEE	31	A3,31	Stand	4.5	3	0	A3					

The Mapper Utility App is designed to link the remote Smart Event Cloud Server with the local CAD software on the user's personal workstation.

The App simplifies and hides the complex requirements of downloading and uploading the data file from the 'Cloud' server and simplifies the management between the App and the CAD software.

The six groups on the control ribbon on the top of the page allows the user to administer the App. **The Group 6:** concerns itself with the setting up of all the hidden links that the App will use in its day to day operation. Once these have been established, there will be no need to visit these setup procedures again unless the App is updated or its environment has been changed.

### Group 1:

Displays the data that is held within the App. There are two types of data detail being stored. First: Each Tradestand 'Stand', requirement is expressed within a row and column. Second: the list of 'Zones' that define the mathematics of issuing the Plot Numbers.

### Group 2:

The choice of methods for importing the Tradestand 'Stand' and 'Zone' detail into the App. The choice will depend upon your ability to export the data from your Showground application. The Three possibilities on offer are:

- 1) Import from a specially crafted XML file from a 'Local Storage Folder'
- 2) Import from a specially crafted EXCEL.(xlsx) file from a 'Local Storage Folder'
- 3) To initiate a 'Smart Event Token' via the Internet to the cloud based Smart Event Showground application. Which will trigger a discrete file transfer (invisible) and populate the App. 'At the touch of the button'.

### Group 3:

This manages your local communication with the CAD and will assist with the assigning of the Plot Numbers to your 'Stands'- if you have created the Zones – and when you are satisfied that all the Stands have all been correctly placed on the Map.

- 1) Open The CAD: This Process evokes the CAD software and inserts the 'Stand' (*Square areas*) onto the 'Drawing' using the metric scale and establishing all the multiple CAD layers that reflect the Stand properties. It is essential that the closing of the CAD is managed by running the "Exit" script this will allow the extraction of the 'Stand' locations, which in turn will allow the 'Stands' to be repositioned in their last known locations, when the drawing is opened on a future occasion.
- 2) When the CAD has been closed, the focus will return to the App where the prompt to import and secure a copy of any changes is requested. This allows for the whole process to be recycled with its enhanced data.

### Group 4:

- 1) When the process of placing the Tradestand 'Stand' details has been completed and returned to the App. The process of issuing the plot number to each 'Stand' can be initiated. This process depends on the hidden layer referred to as the 'Zones'. Each 'Zone' is a catchment CAD area that can identify which 'Stands' have been positioned within its area. Each 'Zone' is visited in sequence and calculates the process to issue the plot number by following its unique individual set of rules.

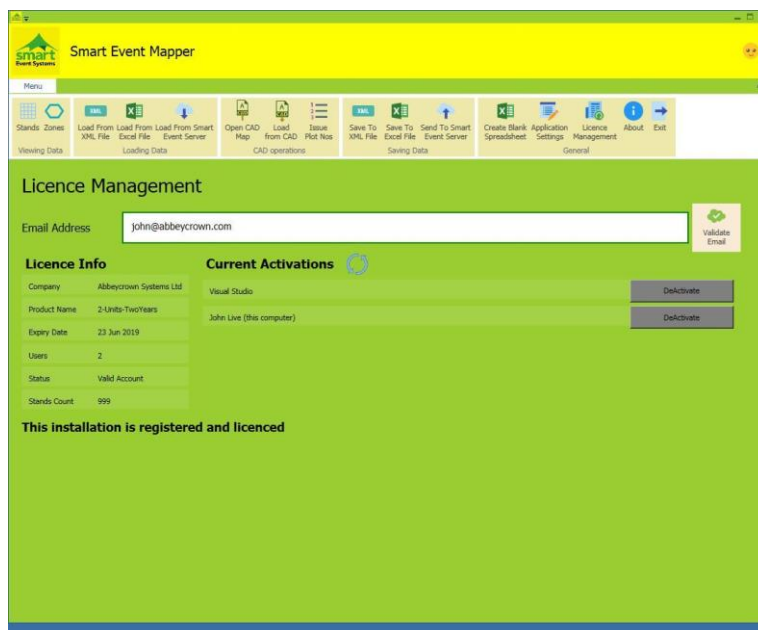
### Group 5:

Having positioned all the 'Stands' and issued all their plot numbers, it is time to secure all the changes. This group manages the export of the data from the App.

**CAUTION: if the App is closed before this data has been successfully exported, all the information will be lost.** You can export the App data in three ways.

- 1) Create a specially crafted XML file and save it in the 'Local Storage Folder'
- 2) Create a specially crafted EXCEL (xlsx) and save it in the 'Local Storage Folder'
- 3) Return the data back (discreetly) via the Internet and import the data into our Cloud based Showground Application.

## Open the Application and Manage the Licence

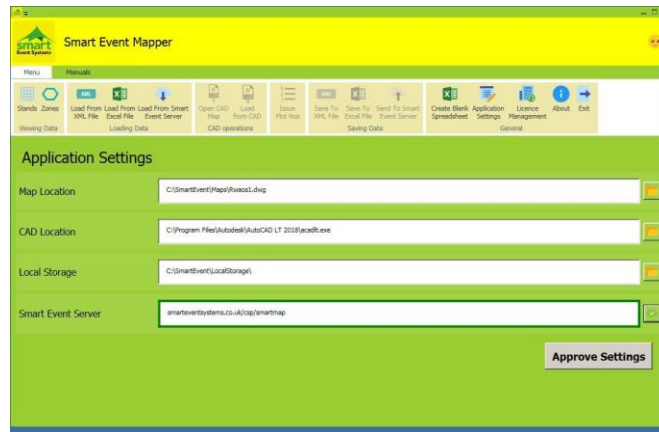


The Licence is purchased as an annual subscription via a phone or email conversation. The facilities of the Mapper App are linked to a Company or an organisation by nominating an email address.

Enter the agreed email address into the App, this, then will consult our licence database and display your purchase criteria. Each company can purchase a licence that allows a number of workstation to participate within its organisation. Select the (This Computer) and enter a unique workstation identifier. The App will then record this workstation as an Activated user. You may De-Activate any workstation and Re-Active another at any time.

To offer the greatest financial flexibility to the product the annual subscription is identified by the email address and encompasses the period of the rental contract, the number of units to run concurrently and it imposes a pre-set limit of the maximum number of stands that can be handled at any session.

## Define your Applications Setting



When the Licence manager has been satisfied, the App Settings will be presented and this needs your acceptance before the App will proceed.

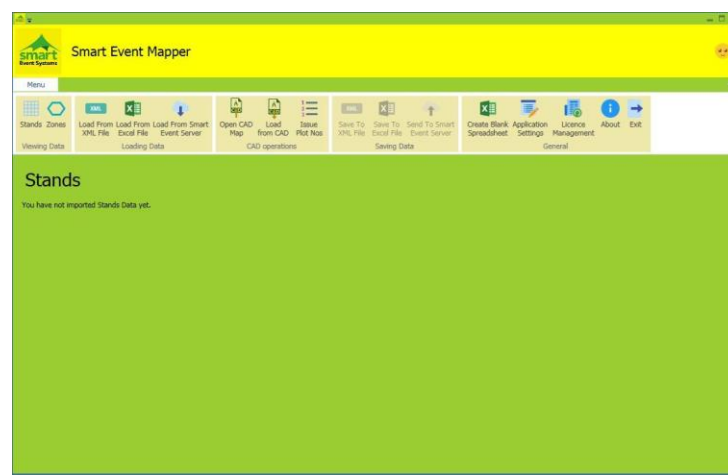
- 1) **Map Location:** is a dynamic entry that will adjust itself each time the 'Stand' detail is imported via our specially crafted data files. The Tradestand export process within our Cloud based Showground Application, uses a schema to control the transferring to data from our Cloud software to the CAD. Each Map location will be known by this schema and will automaticity be selected and therefore, will not require your attention. However, there are occasions where a separate workstation may wish to store its own map drawing in a different location from the norm. This field allows for each user to interact and select a different map from a different location. This field can only be changed by browsing to a different map.
- 2) **CAD Location:** The Smart Event Mapper App can co-operate with both the AutoCAD family and the ZwcAD family, In addition to this, each version of these CAD families may install themselves into differing folders, Use this link to brows to your workstation's physical location of the CAD executable. Caution: the CAD group of buttons will not become 'Active' if the CAD software is not located.
- 3) **Local Storage:** This is where the Excel (.xlsx) and the XML (.xml) files will be stored and retrieved from. There should be no need to change this location.

- 4) Smart Event Server: This is the URL that will be used by the App to collect and return the Data files via the Internet. If you are a customer of the Smart Event Cloud Software Application this link will have been established by default.

If you have a local copy of our database within your own showground premises the link should look like 127.0.0.1/csp/smartmap. Either way click the 'Link' button to allow the 'Link' to be verified by making a call to your database server. If this verification is approved the dialog box will be being enshrouded with a green border. A red border indicates that the service failed to respond.

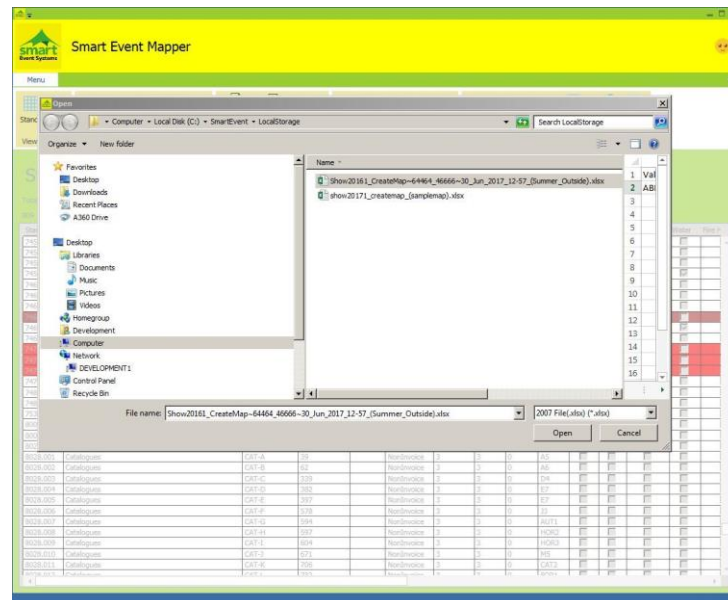
When all details have been approved. Select the 'Approved' button and the App will move forward to the 'Stands' home page.

## Default Home Page



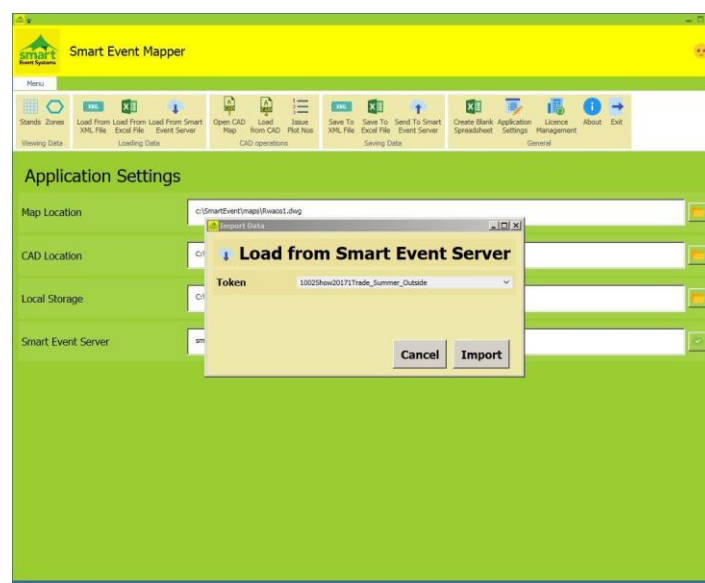
The Default Home Page is the display of all the 'Imported' Stands within the App. Here the user is instructed to use the Group 2 (Import details) to populate the App's database.

## Import Stand & Zone Detail from Local Storage



Importing Excel and Xml files follows the same procedure. Each form will filter for the files extension requested. However, it is expected that the Excel file will be compiled by the User whereas the XML is expected to have been generated by a third party program. The Importing of the Excel file is therefore, subject to and dependant on, passing some validation rules. Failure to pass these validation rules will force the App to modify the Excel file by appending error messages and then resave the file, so that the errors can be examined and corrected.

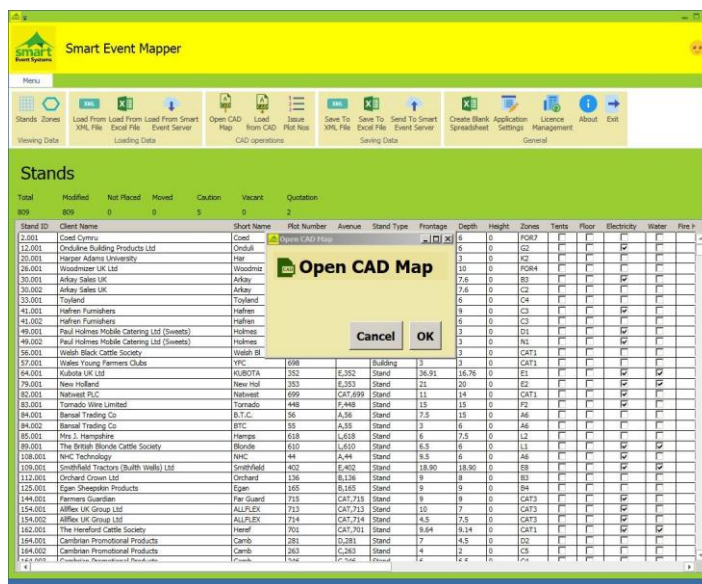
## Import from the Smart Event Cloud Server





The App communicates with the Cloud Server by the submission of a 'Token'. This 'Token' is identified by the Mapper Schema within the Cloud based Showground Application and remains consistent and unchanged when requesting the latest stand detail. The Cloud schema holds the information about the Map name and its location as used by the default user's workstation, the opening script required by the CAD and all the tables defining all the details to be extracted from the Cloud based invoice structure. In short everything is known and prepared, down loaded and transferred to the CAD, at the touch of a button.

## Open the CAD Application



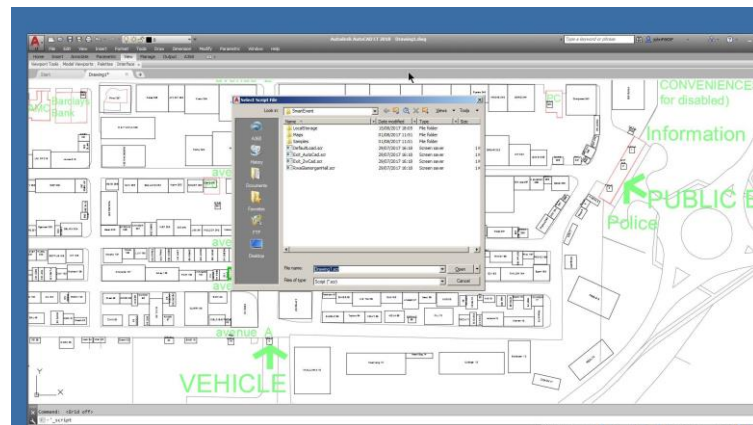
Once the App has been populated with 'Stands' and the settings pathway for the 'CAD' application has been found to exist, the Open CAD group will become available for selection. The opening of the CAD evokes the CAD and attaches a process that selects the required map, manipulates the magnification of the plan and imports all the 'Stand' and 'zone' details. Thus multiple maps within a shows or multiple separate shows can all be managed concurrently. Maps are of course drawn using the metric scale. Thus indoor food halls, Forestry areas and Commercial areas can all be individually tailored. Or if you wish to be very ambitious you can also manage the Pig and Sheep and even Stable problems.

The Manipulation of the CAD is managed by its own CAD protocols, however there are two very useful tips. If you hold the wheel of the mouse down, a 'Hand' will appear. Use this to 'GRAB' the screen to allow you to pull the drawing in any direction, you wish to navigate. Secondly: by rotating the wheel on the mouse the magnification of the drawing will change. If you wish to print out any section of the map, the CAD software will allow you to 'Pre-divine' areas that will allow you to evoke these Pre-defines logical names each time you need

them. These names are stored within the MAP itself. Caution: each time you save a map make sure that there are 'NO Stands' or Zones on the map.

The App **Never SAVES or MODIFIES the map**. There are however benefits of copying (not over writing) a completed map as copies of multiple PDF sections. These can act a visual selling tool displaying availability of unsold spaces (*3 metre units*).

## Closing the CAD



The main benefit of the APP is that it retains the locations of all the Stands for a future occasion.

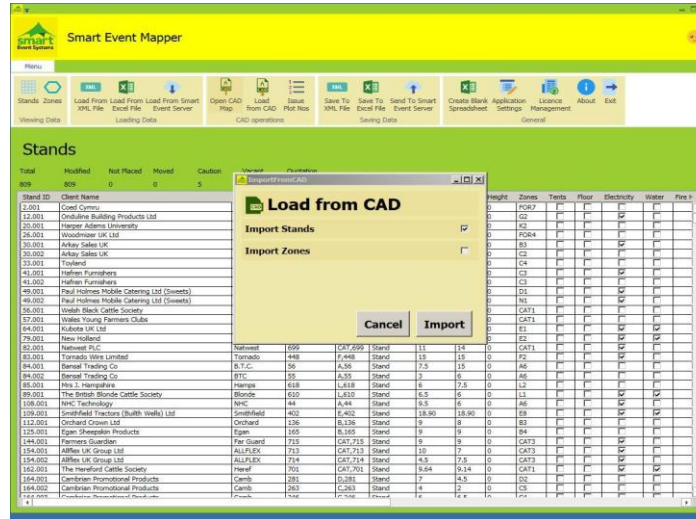
However this is wholly dependent of running the exit script whilst your focus is still inside the CAD application.

The CAD Application has a 'Menu Tool' called; 'Run Script'. This can be missing/ hidden by default. But the facility is there and can be made to be visible. As an alternative you can type the word 'Script' into the command prompt at the bottom of the screen. Either way you must run the "Exit Script". Currently there is a choice of two. Exit\_AutoCAD and Exit\_ZwCAD select the one that reflects your CAD package.

The CAD will close and return the focus back to the App

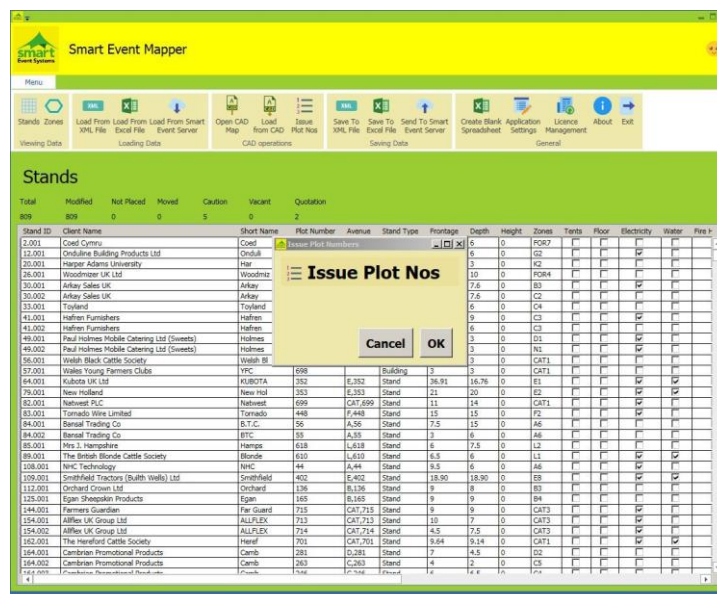


## Retrieve the changes that took place on the CAD



Typically the main process of updating the Map is to place the 'Stands' into their allotted place. But the numbering up or issuing of plot numbers to 'Stands' requires the existence of 'Zones'. We could describe this as an optional extra. A 'Zone' is a catchment area to enable the mathematics of the numbering up process to exist. It is expected that once defined these 'Zone' areas will rarely change. There is, therefore, a need to preserve 'Zone' data as well as the 'Stand' Data. If the 'Stand' data has been modified and or if the 'Zone' data has been modified there is need to import them back into the App so that this information can be preserved.

## Issue the Plot Numbers

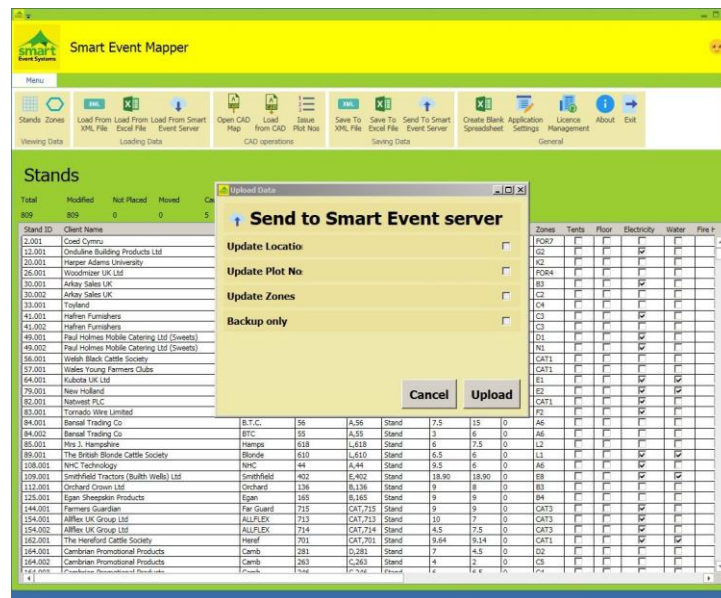


If you have Zones: Run the process whenever the map has been completed and closed.

## Preserve the data, save it to a Smart Event Cloud Server

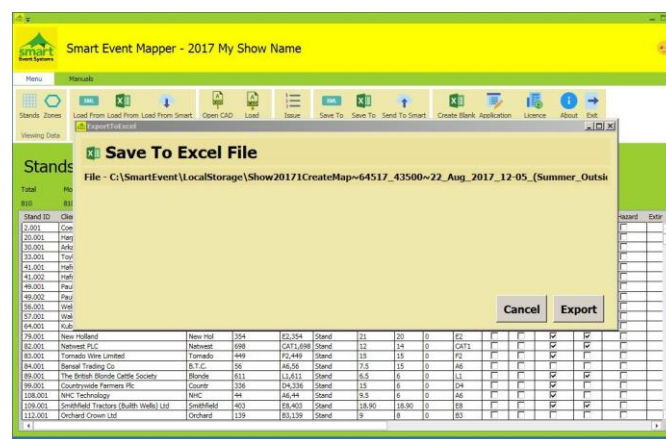
**Whenever the App is closed the 'Stand' and 'Zone' Data is permanently lost for ever!!**

If you are a customer of the Smart Event Cloud application send all these changes back via the 'Send to Smart Event Server'



This is the 'Best and Stress Free' solution. This procedure runs several processes. Firstly all the data is transferred to the Cloud server and then, 'only the selected sections' are updated (*imported*) into the live database. The 'Backup only' infers that the data will be temporary stored as a file and can be recalled at a later date without being attached to the live database. This will allow the hidden file it to be within the Cloud Backup strategy.

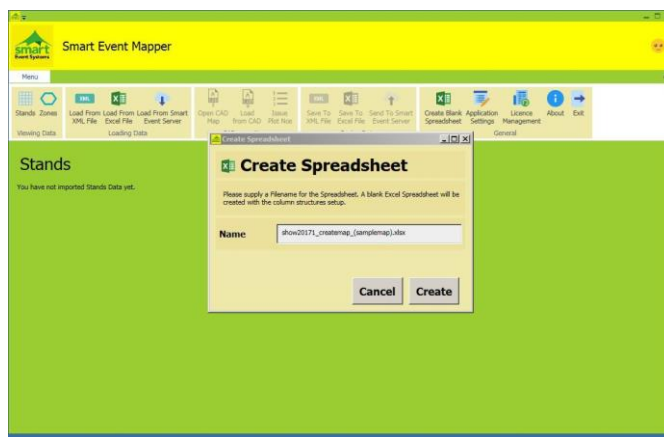
## Save the data as a file in the Local Storage Folder



It is possible to manage the App by creating and managing your own Excel files. Closing the App will erase all the data being held within the App. This means that the Excel Spread Sheet will be your master copy of all the previous history. If you lose this file all your previous stand locations will be lost and that, should be a major consideration. In order that the data may be fully self-contained. The Excel file name is also encoded within the XML data. If the Excel file is imported with errors, the file is overwritten and enhanced with error messages. If you are solely dependent on an Excel file, there is some merit in creating an XML local copy before you start to make changes to the map. This would provide you with a fall back scenario.

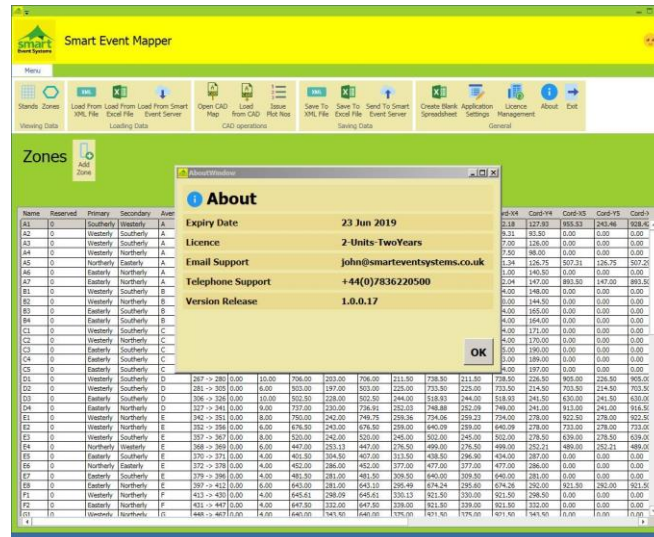
When designing or moving the chords of your zone areas, experience has suggested that the 'Stands' on the map are temporarily moved away from their locations, to clear the view of the working area. This concept requires that you DO NOT import the 'Stands' when you have closed the CAD. Ie change the checkbox's to import only the Zones. In this way you will avoid importing the incompatible data which would corrupt you master copy. The Excel file will contain the unmodified 'Stands' and the new locations of the 'Zones'.

## Create a Blank Spread Sheet (Excel File)



It is possible to take advantage of the App procedures by building your own Excel spread sheet. To enable you to do this, the App can create a 'template' or blank document containing the required three sheets and entitle the columns for your guidance. The installation procedure of the App will have installed a fully populated Spread Sheet within the Local Storage folder, and I suggest you move this to the 'Storage Folder / samples' folder for safe keeping.

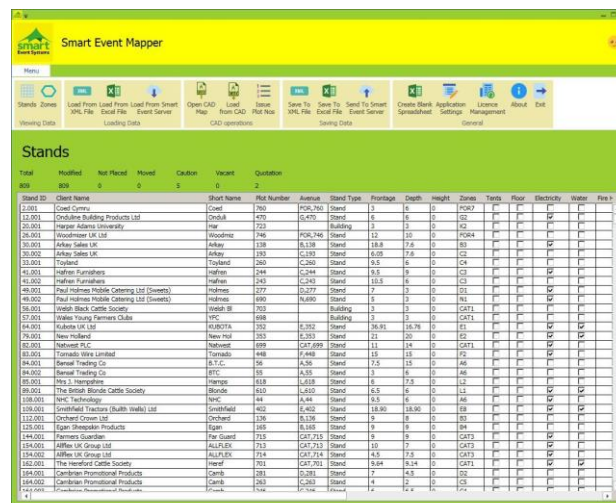
## Help and About



This page displays the Expiry date of your Licence and the number of App units you can run concurrently. The Version Release is the published version of your App. This will help the Support at the help desk know which version you are using. Email and Telephone numbers are linked to The Smart Event Licence server. Thus in the unlikely event these numbers should change your app will be updated and display the current details

## Stands Advanced knowledge

The Stand information is stored within the App and is presented in a similar way to a Spread Sheet. Each Row represents a Stand and each column within that row is the property or an attribute to that Stand. The XML file and the Excel equivalent contains the entire data structure that the App requires, to perform its required remit. However not all the data is displayed within the App, as this data is not of importance to the user's decision making. However, the headings used in the Spread Sheet are mandatory and critical for the App to identify each item.



Stand ID	Client Name	Short Name	Risk Number	Avenue	Stand Type	Frontage	Depth	Height	Joints	Tents	Floor	Electricity	Water	Fire
2.001	Coed Cymru	Coed	260	104.760	Stand	3	18	0	1000	0	0	0	0	0
10.001	Chesham Building Products Ltd	Chesham	470	0.470	Stand	6	6	0	0	0	0	0	0	0
20.001	Hargreave Adams University	Hargreave	723	0.723	Building	3	3	0	0	0	0	0	0	0
26.001	Roadrunner UK Ltd	Roadrunner	746	0.746	Stand	130	130	0	0	0	0	0	0	0
30.001	Arday Sales Ltd	Arday	138	0.138	Stand	18.8	7.8	0	80	0	0	0	0	0
36.001	Arday Sales Ltd	Arday	139	0.139	Stand	6.08	7.8	0	0	0	0	0	0	0
38.001	Toyland	Toyland	260	0.260	Stand	6.6	6	0	0	0	0	0	0	0
40.001	Hoffman Furnishers	Hoffman	244	0.244	Stand	6.6	6	0	0	0	0	0	0	0
46.001	Hoffman Furnishers	Hoffman	245	0.245	Stand	10.5	6	0	0	0	0	0	0	0
48.001	Paul Holmes Public Catering Ltd (Sweets)	Holmes	277	0.277	Stand	7	3	0	0	0	0	0	0	0
49.001	Paul Holmes Public Catering Ltd (Sweets)	Holmes	180	0.180	Stand	8	3	0	0	0	0	0	0	0
56.001	Welsh Black Cattle Society	Welsh B	703	0.703	Building	3	3	0	0	0	0	0	0	0
62.001	Welsh Young Farmers Club	WYC	688	0.688	Building	2	2	0	0	0	0	0	0	0
64.001	Kubota UK Ltd	KUBOTA	352	0.352	Stand	36.95	18.78	0	0	0	0	0	0	0
76.001	New Midland	New Mid	355	0.355	Stand	21	20	0	0	0	0	0	0	0
80.001	Network PLC	Network	689	0.689	Stand	11	10	0	0	0	0	0	0	0
82.001	Tornado Ware Limited	Tornado	448	0.448	Stand	15	15	0	0	0	0	0	0	0
84.001	Renard Trading Co	R.T.C.	56	0.056	Stand	7.5	15	0	0	0	0	0	0	0
86.001	Renard Trading Co	R.T.C.	85	0.085	Stand	3	6	0	0	0	0	0	0	0
88.001	2012 Technology	2012	618	0.618	Stand	6	6	0	0	0	0	0	0	0
89.001	The British Blonde Cattle Society	Blonde	650	0.650	Stand	6.6	6	0	0	0	0	0	0	0
108.001	NFC Technology	NFC	44	0.044	Stand	6.6	6	0	0	0	0	0	0	0
120.001	Chesham Building Products (Bull Walls) Ltd	Chesham	462	0.462	Stand	18.80	18.80	0	0	0	0	0	0	0
122.001	Chesham Building Products	Chesham	136	0.136	Stand	9	8	0	0	0	0	0	0	0
124.001	Chesham Building Products	Chesham	148	0.148	Stand	9	8	0	0	0	0	0	0	0
144.001	Farman's Garden	Farman's	715	0.715	Stand	8	8	0	0	0	0	0	0	0
154.001	Alfalfa UK Group Ltd	Alfalfa	713	0.713	Stand	10	10	0	0	0	0	0	0	0
154.001	Alfalfa UK Group Ltd	Alfalfa	714	0.714	Stand	4.5	7.5	0	0	0	0	0	0	0
164.001	The Westford Cattle Society	Westford	701	0.701	Stand	9.64	9.64	0	0	0	0	0	0	0
164.001	Chesham Building Products	Chesham	138	0.138	Stand	7	6.5	0	0	0	0	0	0	0
164.001	Chesham Building Products	Chesham	263	0.263	Stand	4	2	0	0	0	0	0	0	0
164.001	Chesham Building Products	Chesham	136	0.136	Stand	2	2	0	0	0	0	0	0	0

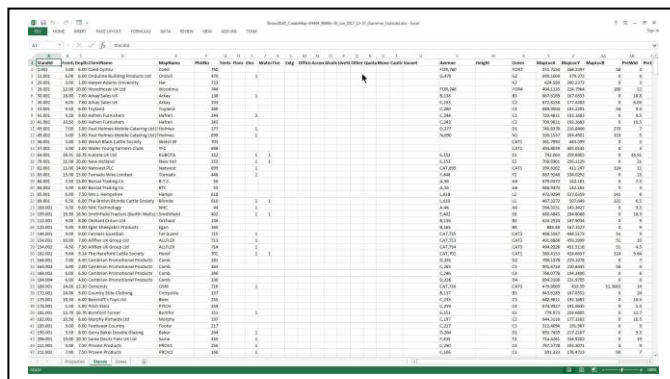
The Stand Detail contains the following Attributes

StandId	The unique number of the Stand and the sequence number within the invoice. Multiple stands within Invoices are permitted 001,002 etc. The Mapper can also contain Non invoice 'Stands' such as permeant building and Toilets. Thus preserving the Plot number allocation and sequence
Frontage	Width of Stand in Metric
Depth	Depth of Stand in Metric
ClientName	Name of Client – Not too long – it has to fit within the Stand size
Map Name	Short Version of the Client Name
PlotNo	Plot number when issued - white
Tents	If Tents required – 1=Yes, 0=No - Green
Floor	If Floor required- Yellow
Elec	If Electric required - Red
Water	If Water Required - Blue
Fire	If Stand Contains Fire Hazzard -Red
Extg	If Stand has Fire Extinguishers on Site - Yellow
Office	If Stand contains an Office Caravan - Blue
Accom	If Stand has overnight accommodation - Magenta
Alcohol	If Stand Has Alcohol Licence - White
Livestock	If Stand has Livestock (Vet report) – Light Grey
Other	Any other requirement to be flagged - DarkGrey
NoCatalogue	Special effects.- Represents a joint stand and will NOT receive a plot no
Quotation	Special effect- Colour stand - Payment has not been received – Orange
MoveStand	Special effect. Colour Stand - Client wants to move the stand - Blue
Caution	Special effect. Colour Stand – Needs Care and Attention - Red
Vacant	Special effect. Colour Stand – Not Sold with plot number allocated-Orange
Avenue	Populated By App – the Area Avenue No
Height	Height of Stand Compared to Zone Height limitations
Zones	Populated by App – The Zone Catchment area on which the Stand sits
26-32	Used by System
ErrorFlag	Error messages found on importing Excel file

Each column can be sorted and ranked in ascending or descending order. The quantity of stands attributed to the special effects are published on the page. These records can be found by manually sorting the respective columns.



## Excel Sample Sheet



The Excel File has Three Sheets.

The Property Sheet contains the elements that link the Spread sheet to the show data. This includes the CAD opening script name, map name and the security ‘Token’.

The Stand Sheet, as discussed, contains all the ‘Stand’ details to be exported to and from the CAD. The Zone Sheet, to be discussed later, contains all the Zone area details to be exported to and from the CAD.

## XML Data file

The XML data file is an application generated file and, as such, is not a user friendly readable file. Traditionally this is only examined by a program developer.

## Zones – Advanced knowledge

The Zone is an area drawn by four Sides (Chords) or more, but not exceeding 10 chords. Zones are ranked in sequence order and contain the rules with which the stands sitting within these areas are interrogated.

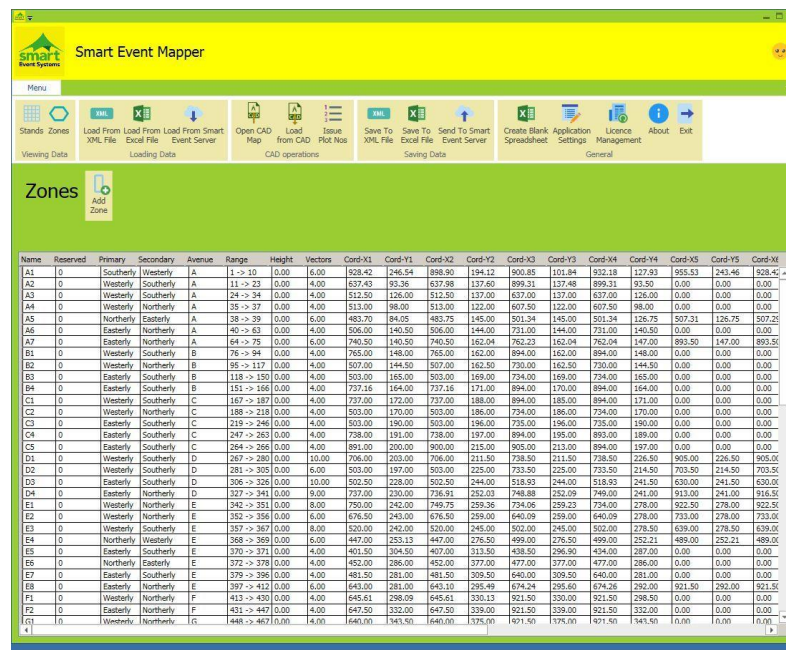
When Viewing the CAD map, each Stand will be found to contain a ‘Blue’ marker at one of its corners. This is the Stand’s location as managed by the CAD. The Administrator’s job is to make sure that this blue marker is positioned within the required zone. The stand ‘Square’ can be rotated and if necessary placed upside down. The placing of this blue corner is empirical to achieving the correct result. The text wording within the ‘Stand’ Square will adjusted to accommodate this twist.

Having placed the ‘Stand’ over (*within the boundaries*) of a zone area the App will link these two units together and thereby create a list of Stands within the collection area.

By opening the Zone Display within the App and moving the mouse over a Zone Area. The Left Click will display all the ‘Stands’ that have been associated with this Zone.



## Display of Zones



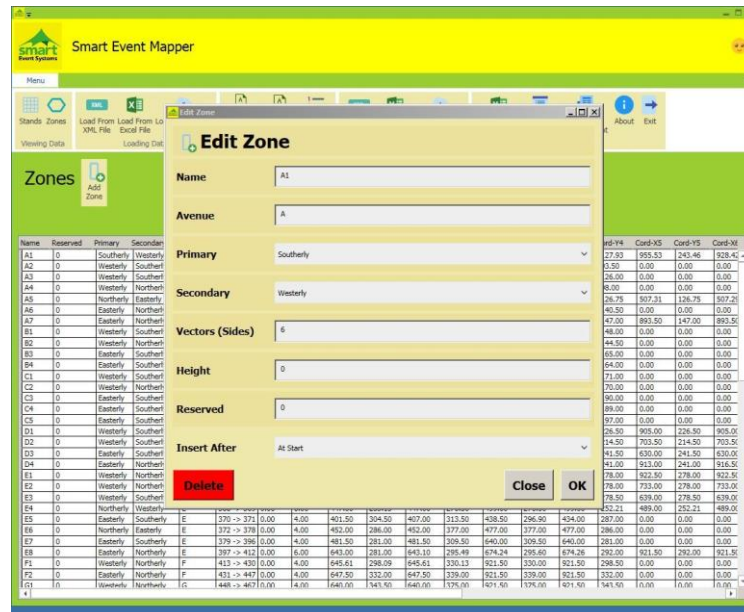
Name	Reserved	Primary	Secondary	Avenue	Range	Height	Vectors	Chord-X1	Chord-Y1	Chord-X2	Chord-Y2	Chord-X3	Chord-Y3	Chord-X4	Chord-Y4	Chord-X5	Chord-Y5	Chord-X6	Chord-Y6
A1	0	Southerly	Westerly	A	11 -> 23	0.00	4.00	637.43	93.36	637.98	137.60	899.31	137.48	899.31	93.50	0.00	0.00	0.00	0.00
A2	0	Westerly	Southerly	A	24 -> 34	0.00	4.00	512.50	126.00	512.50	137.00	637.00	137.00	637.00	126.00	0.00	0.00	0.00	0.00
A3	0	Westerly	Northerly	A	35 -> 37	0.00	4.00	513.00	98.00	513.00	122.00	607.50	122.00	607.50	98.00	0.00	0.00	0.00	0.00
A4	0	Northerly	Easterly	A	38 -> 39	0.00	6.00	483.70	84.05	483.75	145.00	501.34	145.00	501.34	126.75	507.31	126.75	507.25	0.00
A6	0	Easterly	Northerly	A	40 -> 63	0.00	4.00	506.00	140.50	506.00	144.00	731.00	144.00	731.00	140.50	0.00	0.00	0.00	0.00
A7	0	Easterly	Northerly	A	64 -> 75	0.00	6.00	740.50	140.50	740.50	162.04	762.23	162.04	762.04	147.00	893.50	147.00	893.50	0.00
B1	0	Westerly	Southerly	B	76 -> 94	0.00	4.00	765.00	145.00	765.00	162.00	894.00	162.00	894.00	145.00	0.00	0.00	0.00	0.00
B2	0	Westerly	Northerly	B	95 -> 117	0.00	4.00	507.00	144.50	507.00	162.50	730.00	162.50	730.00	144.50	0.00	0.00	0.00	0.00
B3	0	Easterly	Southerly	B	118 -> 150	0.00	4.00	503.00	165.00	503.00	169.00	734.00	169.00	734.00	165.00	0.00	0.00	0.00	0.00
B4	0	Easterly	Southerly	B	151 -> 166	0.00	4.00	737.16	164.00	737.16	171.00	894.00	170.00	894.00	164.00	0.00	0.00	0.00	0.00
C1	0	Westerly	Southerly	C	167 -> 187	0.00	4.00	737.00	172.00	737.00	188.00	894.00	188.00	894.00	172.00	0.00	0.00	0.00	0.00
C2	0	Westerly	Northerly	C	188 -> 218	0.00	4.00	503.00	170.00	503.00	186.00	734.00	186.00	734.00	170.00	0.00	0.00	0.00	0.00
C3	0	Easterly	Southerly	C	219 -> 246	0.00	4.00	503.00	190.00	503.00	196.00	735.00	196.00	735.00	190.00	0.00	0.00	0.00	0.00
C4	0	Easterly	Southerly	C	247 -> 263	0.00	4.00	738.00	191.00	738.00	197.00	894.00	195.00	893.00	189.00	0.00	0.00	0.00	0.00
C5	0	Easterly	Southerly	C	264 -> 266	0.00	4.00	891.00	200.00	891.00	215.00	955.00	213.00	894.00	197.00	0.00	0.00	0.00	0.00
D1	0	Westerly	Southerly	D	267 -> 280	0.00	10.00	706.00	203.00	706.00	211.50	738.50	211.50	738.50	206.50	905.00	226.80	905.00	0.00
D2	0	Westerly	Southerly	D	281 -> 305	0.00	6.00	503.00	197.00	503.00	225.00	733.50	225.00	733.50	214.50	703.50	214.50	703.50	0.00
D3	0	Easterly	Southerly	D	306 -> 326	0.00	10.00	502.50	228.00	502.50	244.00	518.93	244.00	518.93	241.50	630.00	241.50	630.00	0.00
D4	0	Easterly	Northerly	D	327 -> 341	0.00	8.00	737.00	230.00	736.91	252.03	748.88	252.09	749.00	241.00	911.00	241.00	916.50	0.00
E1	0	Westerly	Northerly	E	342 -> 351	0.00	8.00	750.00	242.00	749.75	259.36	734.06	259.23	734.00	278.00	922.50	278.00	922.50	0.00
E2	0	Westerly	Northerly	E	352 -> 356	0.00	6.00	676.50	243.00	676.50	259.00	640.09	259.00	640.09	278.00	733.00	278.00	733.00	0.00
E3	0	Westerly	Southerly	E	357 -> 367	0.00	8.00	520.00	242.00	520.00	245.00	502.00	245.00	502.00	278.50	639.00	278.50	639.00	0.00
E4	0	Northerly	Westerly	E	368 -> 369	0.00	6.00	447.00	253.13	447.00	276.50	499.00	276.50	499.00	252.21	489.00	252.21	489.00	0.00
E5	0	Easterly	Southerly	E	370 -> 371	0.00	4.00	401.50	304.50	407.00	313.50	438.50	296.90	434.00	287.00	0.00	0.00	0.00	0.00
E6	0	Northerly	Easterly	E	372 -> 378	0.00	4.00	452.00	286.00	452.00	377.00	477.00	377.00	477.00	286.00	0.00	0.00	0.00	0.00
E7	0	Easterly	Southerly	E	379 -> 396	0.00	4.00	481.50	281.00	481.50	399.50	509.50	399.50	509.50	281.00	0.00	0.00	0.00	0.00
E8	0	Easterly	Northerly	E	397 -> 412	0.00	6.00	643.00	281.00	643.10	295.49	674.24	295.60	674.26	292.00	921.50	292.00	921.50	0.00
F1	0	Westerly	Northerly	F	413 -> 430	0.00	4.00	645.61	298.09	645.61	330.13	921.50	330.00	921.50	298.50	0.00	0.00	0.00	0.00
F2	0	Easterly	Northerly	F	431 -> 447	0.00	4.00	647.50	332.00	647.50	339.00	921.50	339.00	921.50	332.00	0.00	0.00	0.00	0.00
G1	0	Westerly	Northerly	G	448 -> 467	0.00	4.00	640.00	343.50	640.00	375.00	901.50	375.00	901.50	343.50	0.00	0.00	0.00	0.00

## Each Zone has multiple properties:

Zone Name	Unique character which will appear on the Zone Layer of the map
Primary	First rule of direction when number up. Northerly means start at the bottom and work Northwards. The Map is known as 'North Up'. Westerly means start in the East and move West etc. <b>Northerly, Southerly, Easterly, Westerly</b>
Secondary	Second rule: When there is more than one stand on the primary line Scan in the second direction. <b>Easterly, Westerly</b> or <b>Northerly Southerly</b> . The secondary rule must be 90 different to the first rule
Avenue	Avenue Characters – Typically 1-4 Alpha Characters
Range	Computer generated Identified plot numbers found within the Zone
Reserved	The Plot issuing sequence will skip ( <i>reserve</i> ) this number on change of Zone
Height	Maximum Height allowed in this zone – Error will appear in Error column
Vectors	Number of Chords ( <i>vectors</i> ) within the Zone
West	The most Westerly extent of a Stand – used to aid the calculation
South	The most Southerly extent of a Stand
East	The most Easterly extent of the Stand
North	The most Northerly extent of the Stand
ChordX1-ChordY1	X1->X10,Y1->Y10 All Corner locations defining the zone area

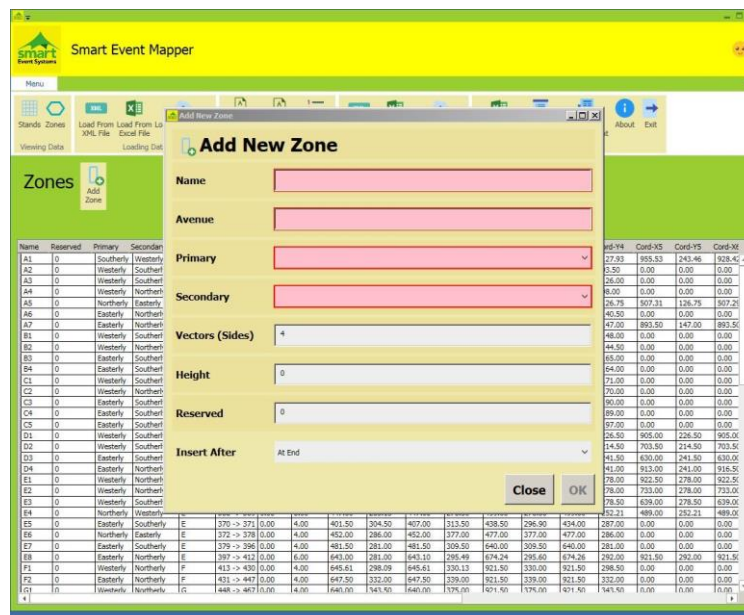
By using the Right Click or Add New Zone button the parameters defining the Zone can be changed.

## Edit Zone



The 'Edit Zone' dialog box in Smart Event Mapper allows users to modify the parameters of an existing zone. The dialog includes a 'Zones' list on the left, a 'Name' field, an 'Avenue' dropdown, and fields for 'Primary' and 'Secondary' directions. It also features 'Vectors (Sides)', 'Height', 'Reserved', and 'Insert After' options. A 'Delete' button is present at the bottom left, and 'Close' and 'OK' buttons are at the bottom right. The background shows a map with various zones labeled A1 through F1.

## Add New Zone



The 'Add New Zone' dialog box in Smart Event Mapper allows users to create a new zone. It includes a 'Name' field, an 'Avenue' dropdown, and fields for 'Primary' and 'Secondary' directions. It also features 'Vectors (Sides)', 'Height', 'Reserved', and 'Insert After' options. 'Close' and 'OK' buttons are at the bottom right. The background shows a map with various zones labeled A1 through F1.

## The Points to Remember

- 1) The Sequence of a Zone will control the flow of the plot numbers issued.
- 2) When adding a new Zone the App will create (*define*) the zone for you. When you open the CAD and make the Zone layer visible, the new Zone with the required number of chords will be visible on the bottom right hand corner of the drawing. The Administrator's job is to drag and drop this image of the Zone into its required area and then stretch the cords to encompass the required area. When the CAD is closed using the relevant script the new zone locations will be retrieved and stored within the App
- 3) Changes to the zone areas is not a frequent activity, Therefore when this occurs you must remember to pass all these changes –'Up the Line' back to the server, so that they will be included in all future uses of the map schema.

## Display Stands within a zone (Left Click on Zone)

## Smart Event Mapper

Maps

Load From Local  
10% File  
Event Server  
Loading Data

Zone/CRC  
Stand  
PZ/NZ  
CRC operations

Save File  
Stand  
Event Server  
Saving Data

Spreadsheet  
Applets  
Management  
General

About  
Exit

## Zones

Add  
Zone

Name	Reserved	Primary	Secondary	Altitude	Range	Height	Vectors	Cont-X1	Cont-Y1	Cont-X2	Cont-Y2	Cont-X3	Cont-Y3	Cont-X4	Cont-Y4	Cont-X5	Cont-Y5	Cont-X6	Cont-Y6
A1	0	Southerly	Westerly	A	1	10	0.00	606.43	246.34	900.00	194.12	900.00	101.84	932.13	127.03	905.53	240.46	926.4	926.4
Stand ID	Stand Type	Client Name	Short Name	PZ/NZ Number	Postage	Depth	Height												
7703-001	Stand	Susan's Farmhouse Fudge	Fudge	15	5	3	0												
1207-001	Stand	Festival of Food Ltd	Festival	15	25	15	0												
1207-001	Stand	Play & Ride	Play	15	6	14	0												
2272-001	Stand	Younger Enterprises	YCE	7	32	3	0												
2820-001	Stand	Clonbury Farm	Hoggin	4	5.5	7.5	0												
2880-001	Stand	The Catapult Association	Catapult	8	6.9	7.5	0												
7128-001	Stand	Food Food Singapore Ltd	FFSL	10	24	10	0												
8094-001	Northwick	Entrance A	ENT A	1	3	3	0												
8112-001	Northwick	Information Booth	INFO-A	1	3	3	0												
8128-001	Northwick	Police	PLS-A	1	3	3	0												
A2	0	Westerly	Southerly	A	11	23	0.00	637.40	83.36	637.88	137.60	899.31	137.48	899.31	93.50	0.00	0.00	0.00	0.00
A3	0	Westerly	Southerly	A	21	30	0.00	512.80	126.06	512.80	137.00	637.00	137.00	637.00	126.00	0.00	0.00	0.00	0.00
A4	0	Westerly	Southerly	A	31	37	0.00	513.00	60.00	513.00	122.00	607.00	122.00	607.00	66.00	0.00	0.00	0.00	0.00
A5	0	Northerly	Easterly	A	30	39	0.00	483.70	84.08	483.70	144.00	602.34	144.00	602.34	126.75	907.31	126.75	907.31	907.31
A6	0	Northerly	Easterly	A	40	42	0.00	484.00	136.00	484.00	144.00	771.00	144.00	771.00	144.00	0.00	0.00	0.00	0.00
A7	0	Easterly	Northerly	A	64	7	0.00	746.50	14.50	746.50	162.04	762.31	162.04	762.31	144.00	881.50	147.00	881.50	881.50
A8	0	Easterly	Northerly	A	74	7	0.00	746.50	14.50	746.50	162.04	762.31	162.04	762.31	144.00	881.50	147.00	881.50	881.50
B1	0	Westerly	Northerly	B	65	117	0.00	507.00	144.00	507.00	160.00	730.00	160.00	730.00	144.00	0.00	0.00	0.00	0.00
B2	0	Westerly	Northerly	B	65	117	0.00	507.00	144.00	507.00	160.00	730.00	160.00	730.00	144.00	0.00	0.00	0.00	0.00
B3	0	Easterly	Southerly	B	118	130	0.00	503.00	168.00	503.00	168.00	724.00	168.00	724.00	165.00	0.00	0.00	0.00	0.00
B4	0	Easterly	Southerly	B	131	166	0.00	572.48	164.00	572.48	175.00	884.00	175.00	884.00	164.00	0.00	0.00	0.00	0.00
C1	0	Westerly	Southerly	C	187	187	0.00	773.00	172.00	773.00	188.00	894.00	188.00	894.00	176.00	0.00	0.00	0.00	0.00
C2	0	Westerly	Northerly	C	188	189	0.00	760.00	176.00	760.00	186.00	724.00	186.00	724.00	176.00	0.00	0.00	0.00	0.00
C3	0	Easterly	Southerly	C	214	264	0.00	503.00	168.00	503.00	168.00	725.00	168.00	725.00	165.00	0.00	0.00	0.00	0.00
C4	0	Easterly	Southerly	C	247	263	0.00	738.00	191.00	738.00	187.00	894.00	195.00	893.00	188.00	0.00	0.00	0.00	0.00
C5	0	Easterly	Southerly	C	244	268	0.00	691.00	200.00	690.00	213.00	805.00	213.00	804.00	197.00	0.00	0.00	0.00	0.00
D1	0	Westerly	Southerly	D	287	280	0.00	706.00	203.00	706.00	211.00	738.00	211.00	738.00	226.50	903.00	226.50	903.00	903.00

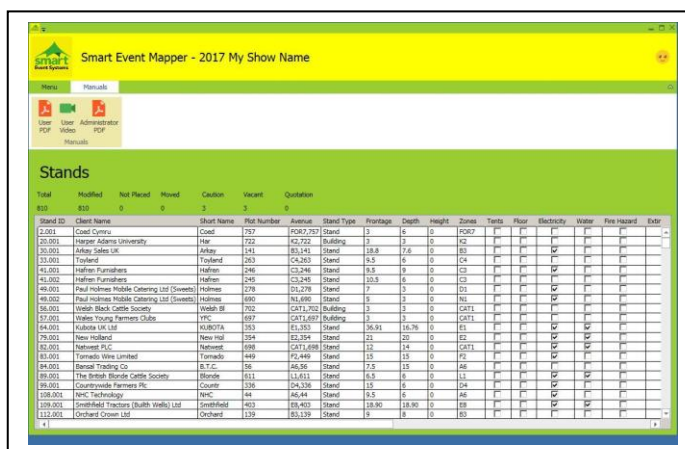
4

The App will display the list of stands on the CAD Map/drawing that have been placed into the Zone catchment area. This list of stands will be subjected to the issuing of plot number according to the rules of this Zone.

## Printing A0 size Plot Drawings

There is a considerable advantage in printing a large size map and hanging it on the wall of your Tradestand office. Typically this is a two print (*defined print area*) operation to enable the magnification large enough to be able to read the Stand detail. If you are having difficulties and do not have an A0 printer and do not know of a supplier that can help you, Smart Event Systems would be happy to come to some arrangement with you.

## Manuals



The App has three links to separate manuals.

- 1) The User PDF Manual – a Copy of this document.
- 2) The Users' Interactive Video Document. This is a concept of a document which has snippets of video clippings. Each topic displays a video solution for an explicit topic. The Idea is that you only select and watch the topic that is of interest. I have not timed the video topics but each topic should play out for less than 4 minutes. If you are in a poor Internet reception area, please allow time for the video stream to be down loaded. It should start itself, once the page is opened. There are manual controls of pause and restart if you need to kick it into life.
- 3) The Administrator's overview. This explains the resources that the App will establish on your workstation.

## The Final Solution



Finally, Smart Event Systems through its parent company ‘AbbeyCrown Systems Ltd’ has been supporting a large Showground association from 1991 until the present day, that’s a long time and we know how the time element becomes the critical factor. If you have a problem we are here to help you. The internet has made the communication between us - free and easy to use.

Know therefore, help is to hand if you need it.

End of Manual  
20 August 2017